



Australian Government
Cancer Australia

Australian Comprehensive Cancer Network – Innovations Showcase



The Australian Comprehensive Cancer Network: An Overview

Professor Dorothy Keefe PSM
Chief Executive Officer, Cancer Australia

The Australian Cancer Plan



Australian Government
Cancer Australia



Australian Comprehensive Cancer Network (ACCN) to facilitate provision of services as close as safely possible to where patients live

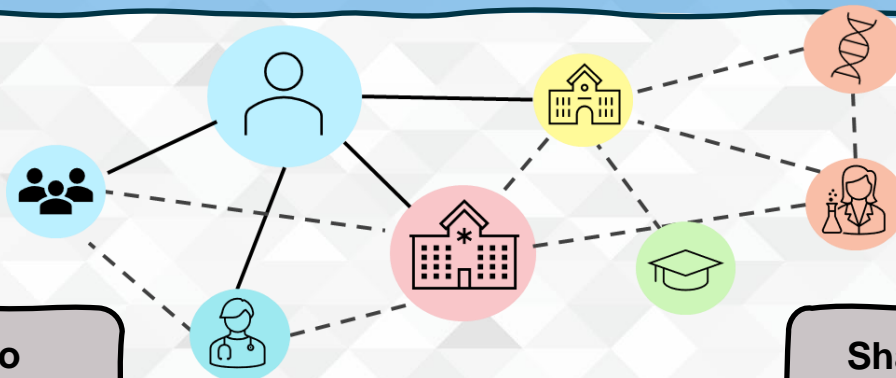
Develop a **national framework** for networked, distributed comprehensive cancer care (2-year action)

Establish a self-governed ACCN to ensure connectivity and sharing of expertise (5-year action)

www.australiancancerplan.gov.au

ACCN VISION:

*Australia has a fully integrated and inclusive network of comprehensive cancer care across the nation, in which every patient, wherever they may be, is linked to the best evidence-driven prevention, research, diagnostics, treatment and support for whichever cancer they have as close to home as safely possible so that **their cancer is detected early, they receive the best possible cancer treatment, and they feel cared for.***



Equitable access to
comprehensive cancer care

Collaboration

Sharing of expertise and
knowledge

Who can join the ACCN?



Australian Government
Cancer Australia

Comprehensive Cancer Centres and other centres of excellence

Regional hospitals

Clinical networks

Primary, community, and allied health services

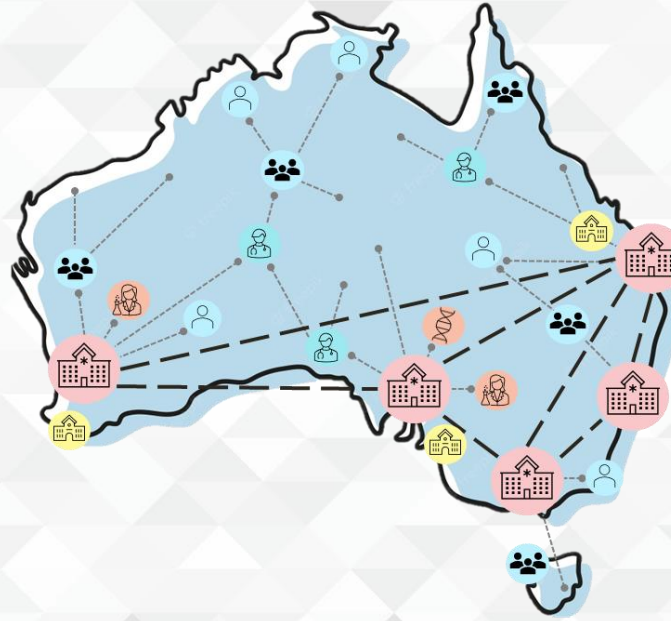
Aboriginal Community Controlled Health Services

Multidisciplinary health professionals working across services / settings

Academic and research institutions

Data collecting/reporting entities

Primary Health Networks



Comprehensive Cancer Centres in the ACCN



Australian Government
Cancer Australia

Comprehensive Cancer Centres and other centres of excellence, underpinned by:

- Research and clinical trials
- Data collection, sharing and reporting
- Future-focused multidisciplinary cancer workforce



Participating services in the ACCN



The delivery of comprehensive cancer care **as close to home as safely possible**

Standards of excellence for networked comprehensive cancer care in Australia



Australian Government
Cancer Australia



Deliver **comprehensive cancer care**



Foster an **engaged, capable, and future focused** cancer workforce



Deliver **equitable access to culturally safe care** across the cancer continuum



Deliver **connectivity and sharing of expertise** across the network



Deliver **research excellence**



Collect, share, and report **comprehensive cancer data** to drive service improvements and better cancer outcomes

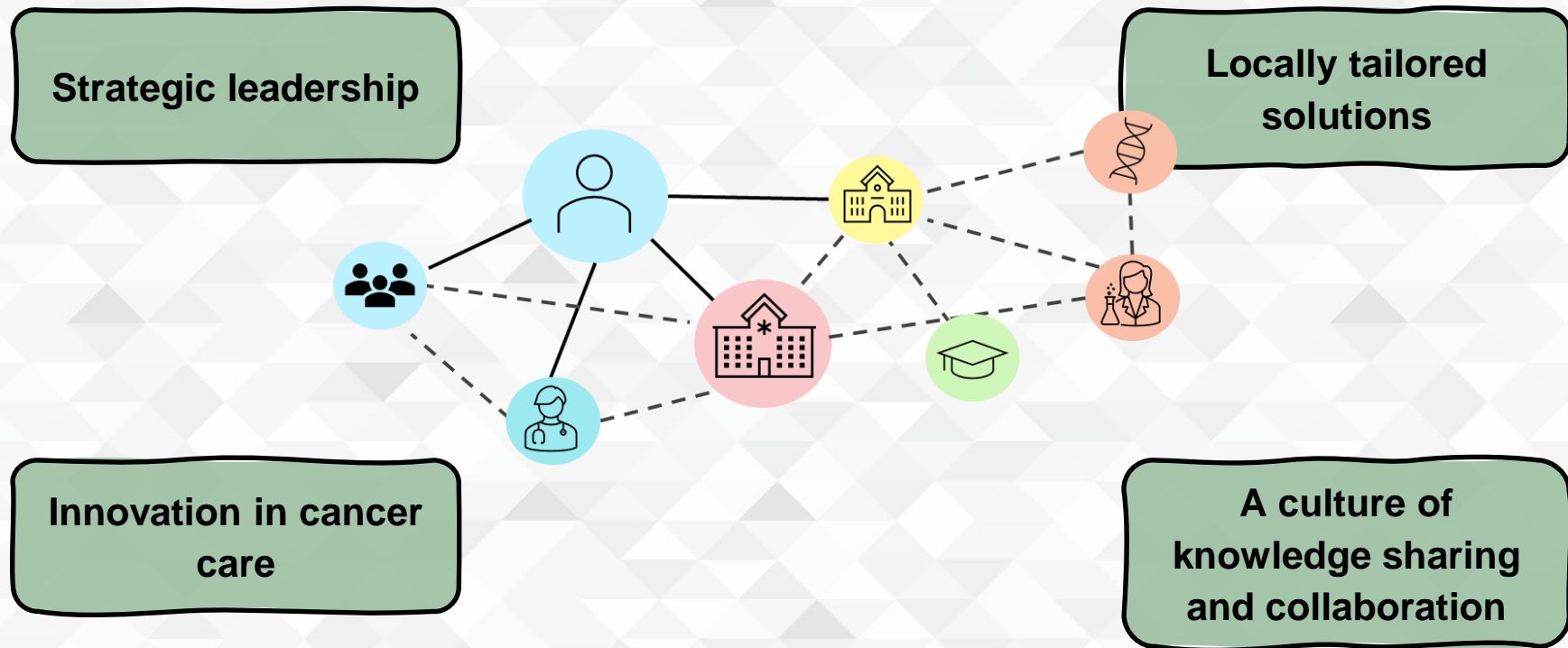


Self-evaluate performance and adherence with the standards of excellence

ACCN as a vehicle for driving excellence in cancer care



Australian Government
Cancer Australia



Delivering culturally safe care for Aboriginal and Torres Strait Islander people



Australian Government
Cancer Australia

The ACCN will:

Promote and embed culturally safe models of care and Optimal Care Pathways

Strengthen collaboration and connection with Aboriginal community controlled services

Build and support Aboriginal and Torres Strait Islander cancer workforce

Enhance data sharing across sectors
Indigenous Data Sovereignty



ACCN and Australian Cancer Plan priorities



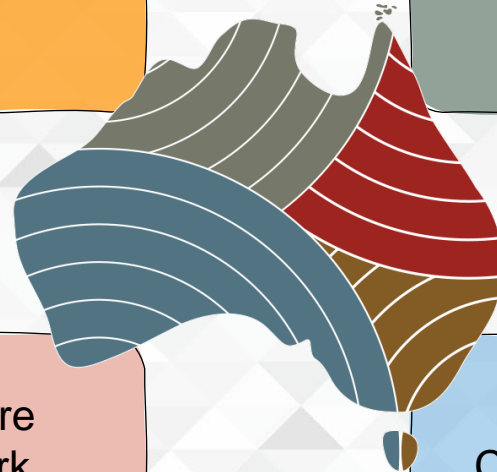
Australian Government
Cancer Australia

Improving First Nations
Cancer Outcomes

National Cancer Data
Framework

National Optimal Care
Pathways Framework

National Genomics in
Cancer Control Framework



ACCN members' portal



Australian Government
Cancer Australia



Australian Comprehensive
Cancer Network

Login

Register

Login by username/email address *

Password *



Australian Government

Cancer Australia

JOIN THE ACCN

<https://www.canceraustralia.gov.au/key-initiatives/join-the-accn>

Enquiries: accn@canceraustralia.gov.au